



Pastoral Care

Bangor Central Integrated Primary School

"We care, we share, we achieve. We learn together."



BELIEVE IN YOURSELF

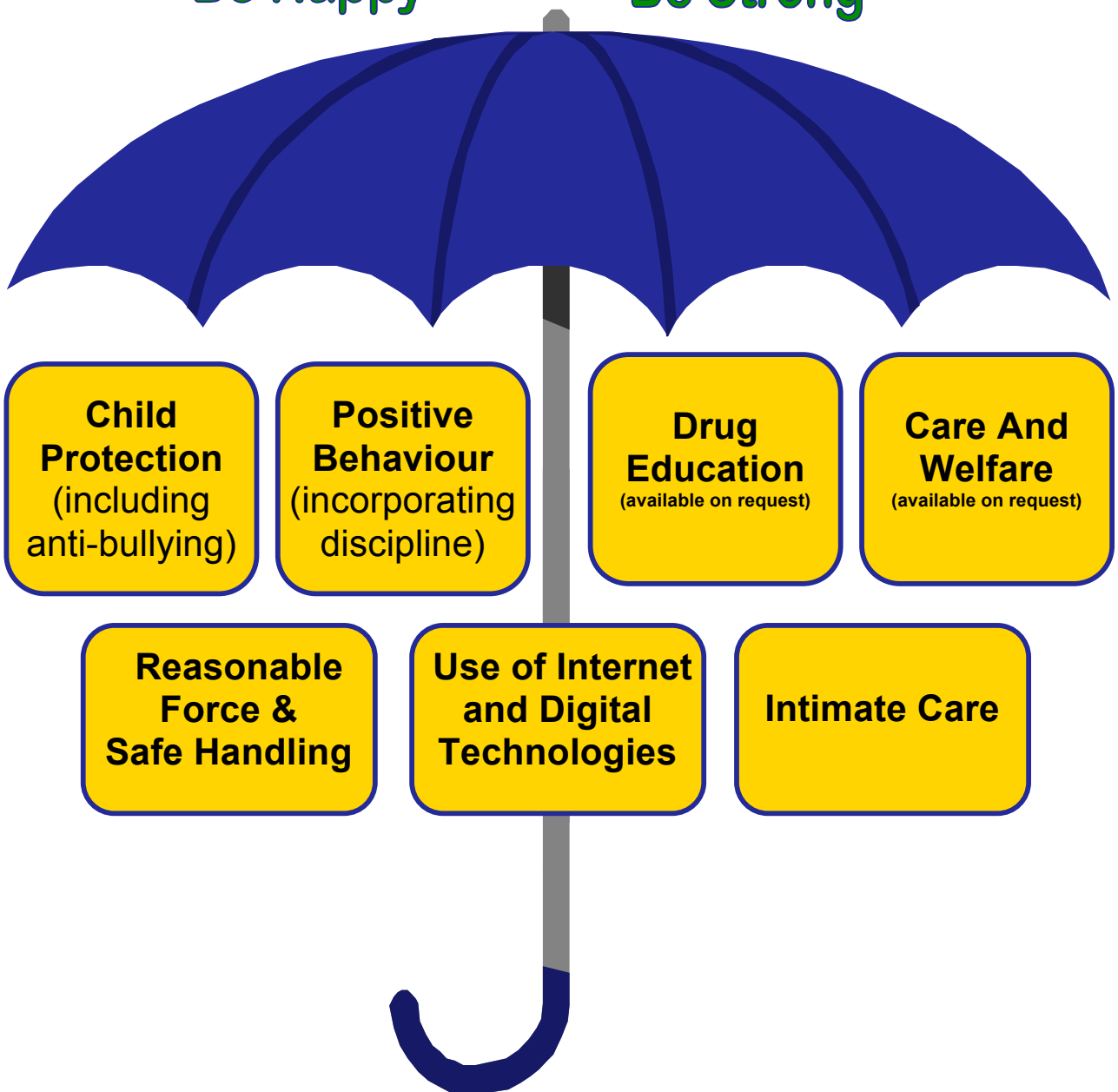
Be Safe

Be Secure

Be Confident

Be Happy

Be Strong



BE YOURSELF

Contents

- 1. Child Protection**
- 2. Anti-Bullying**
- 3. Positive Behaviour
(incorporating Discipline)**
- 4. Reasonable Force &
Safe Handling**
- 5. Use of the Internet and Digital
Technologies**
- 6. Intimate Care**

**(Drug Education and Care & Welfare are
available on request)**