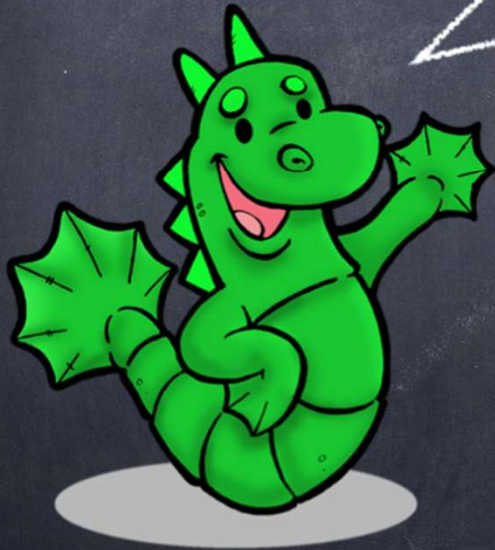


Welcome to
Year 1!



Parent Information Evening

Who's Who?

- GA1: Mrs Emma Christie & Mrs Kirsty Frame
- GA3: Mrs Kelly Northey & Mrs Karen Bowden
- Foundation Stage Coordinator: Mrs Sharon Dowie

Child Protection

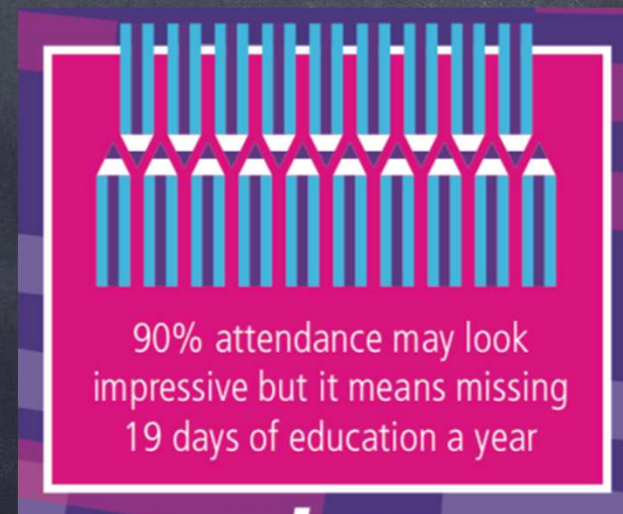
- **Safeguarding Team**
- **Designated Teacher for Child Protection:** Mrs Laura Walker
- **Deputy Designated Teacher for Child Protection:** Mrs Kirsty Arbuthnot/ Mrs Jenni Elliot
- **Designated Governor:** Mrs Lee Thompson
- **Chair Person:** Mrs Betty Holland
- You should have received a copy of the Parent Child Protection Policy in your Year 1 pack in June. It can also be found on our school website. Take the following steps to locate the policy; www.bangorcentral.com Click on About us then click on policies.
- If you didn't get one please say to your child's teacher
- All Year 1 pupils must be collected by an adult at the appropriate door at home time. No child is allowed to go home in a taxi alone.

Settling in Dates and Times

- From Monday 15th September children will be in school from 8:45am - 1:10pm
- (Monday 29th September is an exceptional closure day. Children do not attend)
- From Monday 22nd September children will attend school for the full school day: 8:45am - 1:55pm .

Attendance

- If your child arrives in school after 9am, they will be recorded as late
- If your child is absent from school please phone on the first day of absence or send a note in when they return
- If possible, please make appointments outside of school hours
- The legal requirement for attendance is 85%



Take Home Activities

- Date to be confirmed as to when these will start.
- Sent home on Fridays
- To be returned the following Thursday
- Use as a talking opportunity - what has your child been doing in school?

Everyday Organisation

- Developing independence
- Bookbags/lunch boxes
- Coats
- Labels!
- PE days- Mon and Weds (please wear PE kit on these days only.)

Eating in School

- **Snack**
Healthy
Water or Diluted Juice (No fizzy drinks please)
- **Lunch**
Dinners: these can be booked and paid for online.
Menus are available on the school website.
- **Packed Lunch: Eaten in the classroom with a lunchtime supervisor.**
- **Does your child know?**
Dinners or packed lunch?
Snack or lunch?

School Money

- This is a digital booking platform.
- Allows to book and pay for school dinners online.
- Also this is where you can book Breakfast Club/
After School Club.
- Platform for paying for school trips.
- Cashless office.

Communication

- Email
- Text messages
- Bookbags
- Website www.bangorcentral.com
- Facebook
- Talk to us!

Literacy in Year 1

Talking & Listening



- How can you help at home?

Reading - the building blocks

- Book-rich environment
- Visual discrimination
- Phonological Awareness
 - Environmental and speech sounds
 - Syllable awareness
 - Onset and Rime
 - Rhyme
 - Initial sounds
- Phonics
- How can you help at home?

Read Write Inc

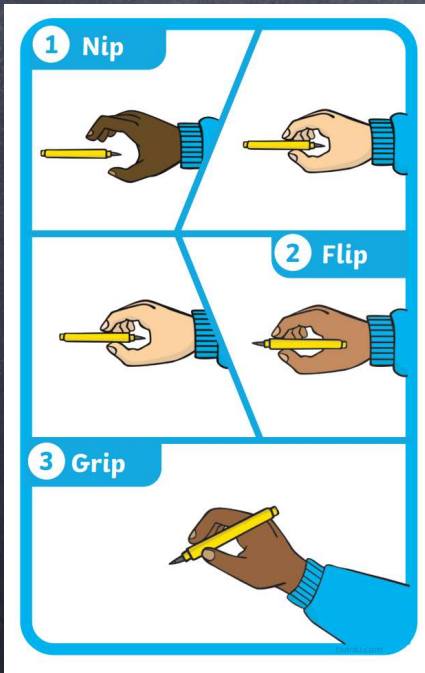


m m	a a	s s	d d	t t	i i
p p	n n	g g	o o	c c	k k
u u	b b	f f	e e	l l	h h
sh sh	r r	j j	v v	y y	w w
z z	ch ch	th th	qu qu	x x	ng ng
nk nk					



Writing - the building blocks

- Finger Gym
- Message Centre
- Disco Dough



- How can you help at home?

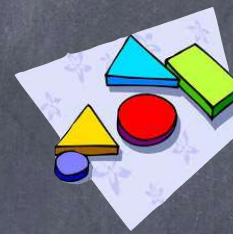


Mathematics & Numeracy in Year 1



The areas of maths...

Number 1 2 3

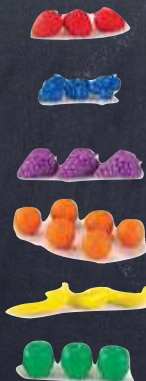


Shape & Space

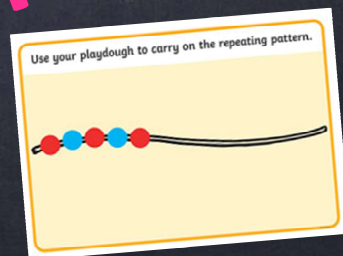
Measures



Sorting



Patterns & Relationships



Why is mathematical language important?



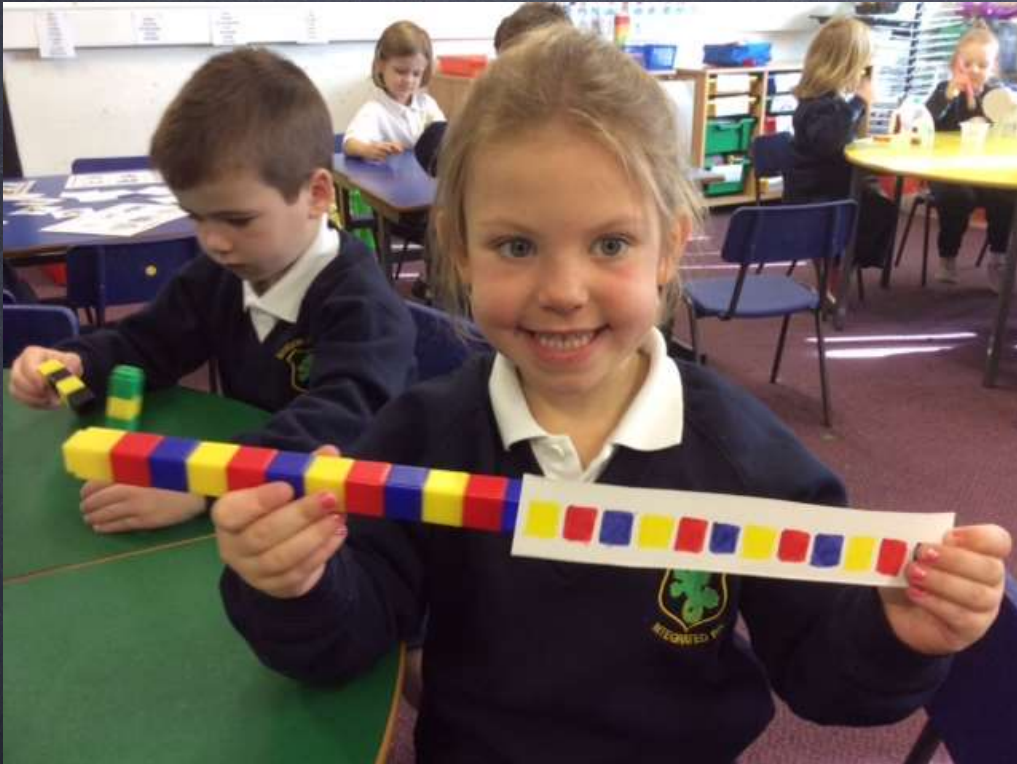
How do we teach maths in school?



PLAY
is the highest
form of
RESEARCH
-Albert Einstein



Making Patterns



Understanding Number

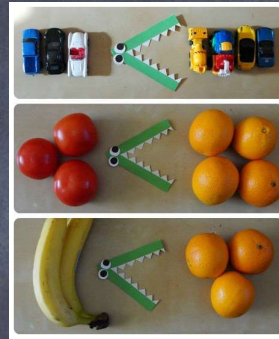


- Counting - mental maths strategies

- Estimation



- Comparing quantities



- Conservation of number



Number recognition & formation



sand



Numicon



How can you support learning at home?

- Numbers in the environment - doors, car registrations, telephone numbers
- Singing number rhymes, counting games
- Sorting sets - cutlery, laundry, toys
- Setting the table - count out the plates & cutlery
- Using mathematical language when looking at books
- Weighing out ingredients, filling cups/containers in the bath
- Play games - Snakes & Ladders, Ludo, dominoes, Snap

Play Based Learning in Year 1

Why Play?



Areas of Play

Home corner

Sand & Water

Sensory Activities

Creative

Loose Parts

Dough & Clay

Small World

Table Top

Construction

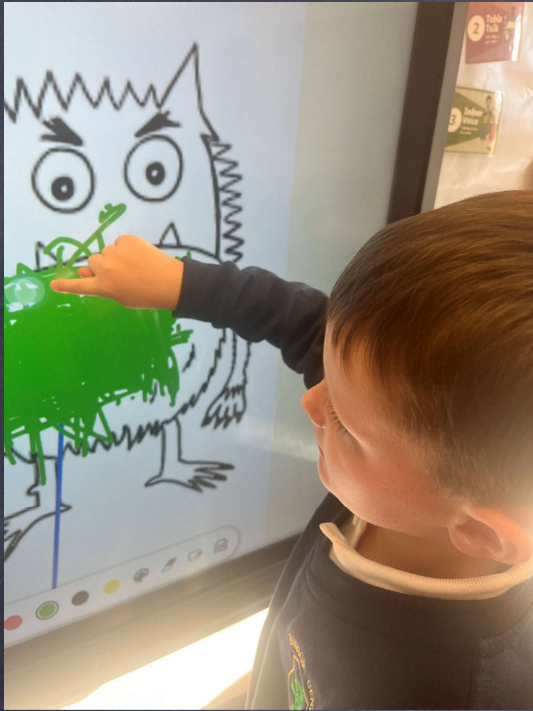
Sand & Water



Sensory Activities



Creative



Loose Parts

It's a big robot and a big tower!



Dough & Clay



Table Top



Construction



What does it look like?

- Child led
- Adults facilitate
- Developing independence
- Cross-curricular
- Topics & themes



Taking Play Based Learning Outdoors



Taking Play Based Learning Outdoors



Be A PLAYful PaReNT

Jump iN PuDdles Laugh at their jokes

BE FUN *Climb Trees* *EXPLORE* **SING silly**

SONGS RUN in the PaRK Say YES to PLAY

MaKE a DeN and CAMP overnight Be CrEaTive

Get MESSY PLAY in the MuD **LAUGH**

Play in the Rain *listen* **Blow BuBBLES**

Play MUSIC loud and DANCE *Make TIME to PLAY*

Smile Make MeMoRies PlaY Clap hands

Have PicNics InSiDE TiCKle

YoU cAn't gEt BacK thEiR cHildhood

– maKe every MomEnT cOuNt

RISE NI

Lots of helpful resources focusing on:

- Developing fine motor skills/ handwriting
- Sensory development
- Self-regulation
- Coping with anxiety
- Developing gross motor skills



• <https://view.pagetiger.com/RISENI/parents>



**You are invited to our first PTFA
(Parents, Teachers & Friends Association)
meeting of the school year!**

Date: Tuesday 16th September

Time: 7pm

Venue: Assembly Hall

Please come along and find out how you can help
the PTFA support our wonderful school.

Any adults with a connection to Bangor Central,
past or present, would be very welcome.

Refreshments will be provided.

**Thank you for taking the time to come
this evening!**

**Please make sure you have ticked
yourself off on the sign in sheet.**